



# THE BINGHAM FARMS POST

Summer, 2011

## ROAD CONSTRUCTION GRINDS ON

Round Two of the marathon Telegraph Rd. reconstruction project is in full swing.

Fortunately, this time around, the project encompasses just the northbound lanes from 12 Mile to Maple Rd. MDOT has made some adjustments in traffic control as a result of the major tie-ups last year. Attempts will be made to keep every other northbound crossover open with at least one crossover opened within a mile. This should reduce the traffic backlogs still remembered from last summer.

Here's what this summer will look like from a traffic perspective.

1. Be prepared for some traffic back-ups.
2. Be diligent as traffic patterns can change at any time.
3. Obey all signs.

4. Use only the open crossovers.
5. DO NOT try and make a left hand turn onto Telegraph from a Mile Road. If caught, there will be a hefty fine.

Above all, please be courteous to other drivers, pay attention and drive the speed limit. Within a 24 hour period recently, a driver, coming from an office building, ignored a Turn Right sign, went straight across Telegraph and ended up caught in an unpaved section. Three drivers made direct left turns instead of using the open crossover just ahead. An accident on Telegraph at 14 Mile occurred when a pickup truck towing a camper



slammed into the back of a Honda that had stopped for a light.

Remember, traffic fines are doubled in construction zones.

It's going to be another long, hot summer. There's nothing we can do about it, so please use common sense and patience when driving. It takes only a second for an accident to happen. And then everyone has to deal with even more gridlock.

Median restoration is anticipated to get underway in the fall. This includes planting new trees. One of our residents, Maggie VanCamp, put in an incredible number of hours designing a tree replacement plan. MDOT has approved the plan and now there will be approximately 90 new trees planted on the medians.

MDOT has set up a complaint line to handle resident and motorist concerns. The number to call is **248.451.0001**.

## VILLAGE BIENNIAL ELECTION SET

Bingham Farms Village Council is comprised of seven members; the President and six trustees. Each position is a 4-year term.

Every two years Village voters go to the polls to elect representatives to the Village Council. This year there are three trustee seats that will be filled.

Five residents are running for these three seats. Incumbents Bill Gollnitz, Delores Tripp and Dorothy Warren are seeking re-election. Jeffrey Modell and Karl Ochadleus also are seeking a seat on Council.

The election will be held on Tuesday, September 13th at Bingham Farms Elementary School. The polls will be open from 7:00 a.m. until 8:00 p.m.

Residents who wish to vote in this election and are not yet registered have until August 15, 2011 to do so. One may register to vote simply by going to Southfield Township located at 18550



W. Thirteen Mile Rd. or to any Secretary of State office.

Any voter over age 60 may apply for an absentee ballot by filling out an application. Call the Village office at 644-0044 and an application will be mailed to you.

A voter over the age of 60 may also be placed on a permanent absentee voter list and at each election an application for an absentee ballot will automatically be mailed to you.

Also, any voter (except those voting for the very first time) who is either incapacitated or will be out of town on election day may request an absentee ballot application.

One final note. The Village is always looking for good help. If you would like to be an election inspector, call the Village office. The hours may be long and the pay may not be great, but the feeling of helping out will be priceless.

Any questions, call the Village office.

## NEW BUSINESSES COMING TO BINGHAM FARMS

Some good news for Bingham Farms. A developer has received approval to construct an outlet building in the Bingham Office Center parking lot (30600-30800 Telegraph).

The building will be home to at least three mid-priced restaurants. Although the developer has secured at least two leases, he has not yet revealed the names of those companies.

The Village does know however that one will be a Mexican restaurant, another a deli-type and a third most probably a mid-eastern restaurant.

Construction is expected to begin this summer.



Con't. on Pg. 4

## BALDWIN LIBRARY CONTINUES BATTLE FOR BINGHAM FARMS' RESIDENTS

It's a done deal. The Bloomfield Township Public Library Board (BTPL) has rescinded borrowing privileges for Bingham Farms and Beverly Hills residents. This will take place on July 1, 2011.

The Board cited economic reasons for enacting this new policy and the amount of resources contracting communities placed on the library.

So how taxing was it? Last year, the Bloomfield Twp. Public Library checked out 43,304 items to card holders from Baldwin's three communities: Birmingham, Beverly Hills and Bingham Farms. That was 4.9% of the BTPL total circulation. During the same period Baldwin checked out 36,483 items to Bloomfield Township residents, which accounted for 5.1% of circulation.

According to this data (supplied by Baldwin Library), it's basically a wash on circulation between the two libraries.

What is interesting is the timing of the BTPL Board decision. The Troy library may close if its latest millage proposal on their August ballot does not pass. Bloomfield Hills residents have been using the Troy library.

Now Bloomfield Hills is negotiating with the Baldwin Library to provide library services to their residents. Did this have something to do with the BTPL policy change?

Since 2003 BTPL had carried out long, contentious and ultimately un-

successful negotiations with Bloomfield Hills. At one point, a Bloomfield Hills resident sued the BTPL and that case went all the way to the Michigan Supreme Court. The library finally prevailed but at a cost of over \$200,000.

So the next step is the Baldwin Library will make changes as to how Bloomfield Township residents are handled at the Baldwin Library.

Effective July 1, 2011, Baldwin will probably begin applying the same rules to Bloomfield Township residents as it does to the residents of most other communities in the area. Those changes could include:

- limiting the number of items that can be checked out to no more than eight.
- They would pay the higher, non-resident fee for Hot Picks books, Hot Picks DVDs and video games.
- Also, Baldwin would turn over to the BTPL the responsibility to serve the homebound patrons of Bloomfield Township—a responsibility that Baldwin has assumed for over two decades.

While the Baldwin Board continues to work with BTPL, they must take into consideration the needs of Birmingham residents, who are not involved in this battle.

So, in order to maintain access to the BTPL for Birmingham residents, the Baldwin Board has decided on this measured response.

## NEW WAY TO KEEP INFORMED

Sign up today! Right now! Sign up to subscribe to the Village's new electronic method of keeping up on breaking news in the Village.

The Village has signed on to Oakland County's "GovDelivery" email/text notification system. This is a free service the County is offering all municipalities in Oakland County.

This service will be used to provide residents with immediate information on water alerts, police activity and other important messages from the Village, such as important, new website messages.

Just log on to the Village website, binghamfarms.org and click on the "Stay Informed" tab at the bottom of the page.

Type in the information and we'll put you right into our system. Email addresses are solely the property of the Village of Bingham Farms. They are not used for any other purpose.

Residents who were on the Village's prior notification system, have automatically been transferred to the govdelivery system.

Any questions, give the Village office a call.

## FIRE DEPT. ANNUAL MEETING SCHEDULED

Every resident in Bingham Farms is invited to attend the Franklin/Bingham Farms Volunteer Fire Dept. Annual Meeting.

It's set for Monday, August 1 at 8:00 p.m. at the Fire Department, located at 32707 Franklin Road, right next to the gas station.

It might be the perfect time to explore downtown Franklin at the same time. Hear there's a new coffee/ice cream store called the Farmhouse, located at 32644 Franklin Rd.

### UPCOMING VILLAGE COUNCIL MEETINGS

8:00 p.m.

July 25  
August 22  
September 26

### SOUTHFIELD TOWNSHIP FREE HOUSEHOLD SHREDDING

September 24, 2011  
10 a.m. - Noon  
18550 W. Thirteen Mile Rd.

## THE PRESIDENT'S CORNER

David M. Leckie

Well, it's hard to tell if it's Spring or Summer. Mother Nature can't seem to make up her mind. However it's nice to see Village residents planting and cleaning up winters leftovers.

This time of the year also brings out the criminal minded, so please keep an eye out and lock your doors even if you're just going to work outside.

As you've probably read, the Bloomfield Township Library Board has decided to end our 30 year reciprocal agreement to use their facility. This decision surely doesn't follow the Governor's call for communities to share services. Our Baldwin Library Board is fighting hard to get this decision reversed. They have told the Township Library Board to reverse the decision or Baldwin will reciprocate regarding services provided to Bloomfield Twp. residents. Right now Bingham Farms residents will be prohibited from taking books out from the Township Library. If anything changes, we will get the word to you.

On another note, Bingham Farms has some positive news. There will be three new restaurants coming to the Village. Construction on the building should begin some time this summer. It

will be located in the front parking lot of the Bingham Center. This building along with the restaurants will provide additional tax revenue for the Village.

Your Village Council has passed a balanced budget for FY 2011-2012. We are in pretty good financial shape with a healthy fund balance. But we are watching our expenditures carefully.

By now you are well aware that MDOT is back repaving the northbound lanes. It seems like the delays are never ending. Please watch your speed in the Village and the highway, as the police are watching for speeding vehicles trying to get around t h e d e l a y s .

Last but not least, while our Boards are currently full, it's nice to have a few names in our files that we can tap to fill future vacancies. If you are interested in serving on our Planning Commission or Design Review Board, just fill out an application (which can be found on the Village website) or call the Village office and ask for one.

HAVE A GREAT AND SAFE SUMMER!

## A TOAST

Bingham Farms Mobile Watch members don't usually have champagne at our monthly meeting. But we did in June (donated by a member) for a celebration, and to offer a toast to the residents of Bingham Farms for solving the Mobile Watch financial problem.

You may remember our April letter, sent to all Bingham Farms residents, which explained that our village had found it necessary to eliminate funding to several groups, including Bingham Farms Mobile Watch. We asked for your help to keep us afloat.

You responded in wonderful style, helping us to recover our mailing cost, and keep us alive for several years to come. You can imagine how pleased we are for your thoughtfulness.

And so, instead of the usual coffee and cookie as our evening refreshment, at our June meeting we toasted you with champagne and many thanks for your outstanding support.

As an organization, we are now alive and well, and we will do our best to merit your support. We are sorry you could not join us for the toast, but it contained a hearty thank you to all Village residents.

Bingham Farms Mobile Watch

## HELP FOR THOSE FACING FORECLOSURE

The recession isn't over yet and many homeowners continue to struggle. The foreclosure rate is still high.

A foreclosure can happen to anyone. A recent job loss or mounting medical bills can force homeowners into the nightmare of foreclosure. The emotional stress placed on a family is difficult, but there is help out there.

A new web portal has been created to provide homeowners in Wayne, Oakland, Macomb and Washtenaw counties with one trusted source to obtain the



assistance they need to possibly avoid foreclosure. The portal guides a homeowner through the process that will connect them to non-profit housing counseling agencies. This is **free help**. The service is a result of a regional collaborative of county governments and non-profit organizations. Log on t o www.fightmortgageforeclosurefinsc.org

The link is also available on the Village website www.binghamfarms.org

**SIGN UP TODAY FOR GOV DELIVERY**  
**LOG ON TO www.binghamfarms.org**  
**Click on the Stay Informed icon at the bottom of the website**  
It's fast. It's easy. It's safe.  
Stay Informed

## NEWSLETTER GOES ALL DIGITAL

In a cost saving move, the Village Council has decided to stop printing the Village newsletter and have it available only on its website. By enacting this measure, the Village will save printing, handling and mailing costs.

The newsletter is published quarterly and available the first week of July, October, January and April.

If you sign up for the govdelivery notification system (as discussed on Pg. 2 of this newsletter), you will be sent an email or text notifying you that the quarterly newsletter is online.

Otherwise, keep checking the Village website,

[www.binghamfarms.org](http://www.binghamfarms.org).

New postings are placed on the website regularly. You will find postings for BASCC (Birmingham Area Senior Citizens Coalition), library postings, information on recycling and much more.

It takes just a few minutes to sign up for the text or email alerts. Don't miss out. Sign up today.

## THE FARMERS' ALMANAC SAYS

### July 2011

**1st-3rd.** Squally in the Great [Lakes](#), followed by clearing.

**4th-7th.** Mostly fair.

**8th-11th.** Scattered [thunderstorms](#).

**12th-15th.** Hefty thunderstorms roll over Ohio River and Great Lakes.

**16th-19th.** Fair, cooler weather.

**20th-23rd.** Scattered gusty thunderstorms.

**24th-27th.** A few showers and thunderstorms for the Great Lakes to Kentucky.

**28th-31st.** [Thunderstorms](#) followed by clearing skies.

### August 2011

**1st-3rd.** Showery, thundery weather.

**4th-7th.** Unsettled, but cooler for the Great Lakes.

**8th-11th.** Scattered showers.

**12th-15th.** Sunny to partly cloudy and pleasant for the Great Lakes

**16th-19th.** Unsettled; gusty winds for the Great Lakes.

### New Businesses Cont. from Page 1

With the abrupt closing of Shirraz (30100 Telegraph) earlier this year, the building owners are in talks with several prospective restaurant groups to take over the space. However, some legal hurdles must be cleared before more productive discussions can evolve.

All of this is good news that hopefully portends an uptick in the economy.

Another addition to the Telegraph Rd. business corridor will be a sidewalk that will be constructed on the east side between 12 1/2 Mile Rd. and 14 Mile Rd. There will be a break in continuity just north of 13 Mile Rd. where the Franklin Branch of the Rouge River crosses under Telegraph. The cost to extend a sidewalk over this section was prohibitive.

This seasonal sidewalk will be constructed with federal highway funding. The Village will only be responsible for future repairs to the sidewalk.

*A huge Thank You to a Good Samaritan who has been cutting the grass around the Grow Zone at Bingham Lane & 14 Mile*

**BALDWIN LIBRARY**  
**CLOSED**  
**SUNDAYS**  
**DURING**  
**JULY & AUGUST**

**SIGN UP FOR GOVDELIVERY**  
**Go to**  
**[www.binghamfarms.org](http://www.binghamfarms.org)**  
**Click on**  
**Stay Informed icon**

## YOUTH GROUP TO SOLICIT IN THE VILLAGE

A group of young people from the Michigan Conference of Seventh Day Adventists will be in Bingham Farms doing "door-to-door missionary work" in the months of July and August.

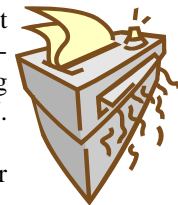
They will be seeking to place Christian literature in each home that will accept it and enable residents to give a donation to help further their missionary training.

Religious ministries such as this are protected by the First Amendment, but are subject to soliciting during reasonable times and under reasonable restrictions. They must however, obey any "No Solicitation" signs visible from the main door of a private residence.

As required by Village ordinance, this organization has registered with the Village and the police department.

## SOUTHFIELD TWP. TO HOLD FREE SHREDDING EVENT

Southfield Township has returned to offering their Free Household Document shredding on a semi-annual basis. The next Free Document Shredding Event will take place on **Saturday, September 24 from 10:00 a.m. - Noon**. It will be held in the Southfield Township parking lot located at 18550 W. Thirteen Mile Rd.



The contractor will accept up to six storage-sized boxes. Remove any staples, clips etc. Remove paper from binders.

Any questions, call Southfield Twp. at 248.540.3420.

## ***KEEP FIGHTING THE WEST NILE VIRUS THIS SUMMER***

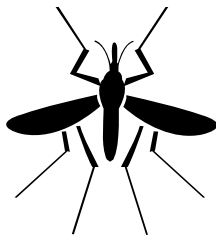
Mosquito season is upon us once again. The monsoon rains of the past several months have provided the perfect environment for a banner crop of mosquitoes, resulting in another season of fighting the West Nile Virus.

For most people the Virus is just a slight nuisance. Many don't even realize they've been infected. It's another story for older adults and very young children. The virus could cause major problems.

The virus is spread to humans when bitten by a mosquito that carries the virus.

Last year, just one human case was reported statewide, and that was in Wayne County.

The Oakland County Health Department believes that the low numbers of human infection is directly re-



lated to the prevention methods people are taking. The best advice — keep doing what you are doing.

- ♦ Reduce areas where mosquitoes breed,
- ♦ Repel to protect against mosquitoes, and
- ♦ Report potential mosquito breeding areas.

Other measures that can reduce the risk of contracting the virus include:

- ♦ Repair all holes in windows and screens to keep mosquitoes out of your home.
- ♦ Empty water from mosquito breeding sites such as buckets, barrels, cans, old tires etc.
- ♦ Avoid being outdoors when mosquitoes are most active (dawn and dusk).
- ♦ Wear light colored, long-sleeved shirts and long pants when outdoors.

- ♦ Apply insect repellants that contain the active ingredient DEET to exposed skin or clothing. Always follow the manufacturer's directions for use. (Avoid applying repellent containing DEET on children less than two years of age.)

The state and the county still monitor the situation by recording the number of dead birds. This often is an indicator that the bird was infected.

If you find a dead bird, report your finding to the Oakland County Health Division Hotline at 1-877-377-3641. Then, properly dispose of the bird and wear gloves to protect yourself from direct contact.

For updates on West Nile Virus, log on to the state or county website at:

[www.michigan.gov/westnilevirus](http://www.michigan.gov/westnilevirus)  
or  
[www.oakgov.com](http://www.oakgov.com).

## ***INVASIVE SPECIES ATTACKING TREES***

First it was the Gypsy Moth attacking and killing trees. They went away for awhile but it looks like they could be returning. The moth lays eggs. When hatched they look like caterpillars and eat the leaves of trees, some to the point of defoliation. This makes the trees susceptible to other diseases.



This was then followed by the Emerald Ash Borer that destroyed hundreds of ash trees in the Village.

Now it's pine wilt caused by a microscopic, worm-like animal that feasts on the living plant cells around the water conducting tissues of the pine tree. At this point it is only attacking pines.



Creeping vines, such as the Virginia Creeper, are also prevalent throughout the village. This thick vine actually

**Cont. on Pg. 7**

## ***YEAR ROUND DROP OFF FOR HAZARDOUS WASTE***

It's convenient, easy and available all year long. Bingham Farms residents can drop off their household hazardous waste products at the SOCRRA facility on Coolidge Highway in Royal Oak. The contract between the Village and SOCRRA also allows residents to drop off electronic equipment, such as televisions (no consoles) and computer equipment.



Appointments are necessary. Call SOCRRA at **248.288.5153**. The staff will ask a few questions about what type of material you want to drop off and how much. You will be given a date and time for your drop off.

Put the items in your car, drive to the site at the scheduled time, drive up to the little building in the back and show proof of residency (driver's license will do). The SOCRRA staff will do the rest.

They will remove all the items from your vehicle.

Fill out a form and then be on your way. The whole experience should take less than an hour and that's door to door.

Should you have any questions regarding acceptable materials, call SOCRRA at **248.288.5153** or visit their website at [www.socrra.org](http://www.socrra.org).

Remember the contract covers just household hazardous waste and electronics. It does **not** cover business hazardous waste. Federal and state environmental laws prohibit the facility from accepting this type of waste.

Businesses may call the Environmental Recycling Group at 734.437.9650 to receive information of proper disposal. They are located at 13040 Merriman, Ste, 299, Livonia.

## **BITS N PIECES**

### **Garbage Pick Up**

- Regular garbage pick up is scheduled for Thursdays.
- Have garbage out by 7:00 a.m. on Thursdays or after 7:00 p.m. Wednesday evening.
- Maximum weight of rubbish cans or any other item not to exceed 60 lbs.
- Do not place garbage or compost at the street prior to Wednesday evening. It's not fair for your neighbors to look at that for a week.
- Questions - call Car Trucking at 586.791.8480

### **Grass mowing**

- It's best in the summer to keep your grass at 3" as this prevents the grass from drying out.
- Do not let grass get 8" or more as this will cause the Village to get involved.
- Weeds that reach 8" or more will also get the attention of the Village.
- Do not have your lawn company cut grass on Sundays. There's nothing worse for your neighbors to be outside and hearing the lawn mowers going.

### **Construction Work**

- Construction should not begin before 7:00 a.m. and should be completed by dusk. This means the start up of construction equipment.
- MDOT (Telegraph Rd) construction is exempt from this requirement.

### **Tree Removal**

- Homeowners' are allowed to remove up to 3 healthy trees in a two year timeframe. This does not apply to dead or diseased trees
- If you're re-landscaping and it involves removal of trees, call the Village office first to determine whether a permit is needed.

### **Summer Storms**

- If the power goes out, call DTE at  
**Cont. on Page 7**

## **SPECIAL PROGRAMS COMING TO THE BALDWIN LIBRARY**

Baldwin has the information you need available online with easy access from home. From Consumer Reports to Value Line and Morningstar to Mango Languages, we have you covered! You just need your library card number and PIN to access these resources from home.

Visit [www.baldwinlib.org/databases](http://www.baldwinlib.org/databases) to see what we have to offer!

Join us on Sunday, August 7 from 2 p.m. to 4 p.m. as we welcome the Dodworth Saxhorn Band as part of our ongoing commemoration of the 150<sup>th</sup> anniversary of the Civil War. The Library and Birmingham Historical Museum have partnered to provide this afternoon of fun for the entire family!

The Dodworth Saxhorn Band dresses the part and performs music from the period on original instruments. We'll meet at the Civil War monument in Birmingham's Shain Park at 2 p.m. and then will march with the band a few blocks to the Museum for the main event.



Interested in staying up to date on what's happening at the Library? Register to receive our eNews delivered to your inbox each month. Visit [www.baldwinlib.org/enews](http://www.baldwinlib.org/enews) to sign up today!

Don't forget that you can download up to three songs per week from our new music download service, Freegal. Visit [www.baldwinlib.org/freegal](http://www.baldwinlib.org/freegal) to get started.

Baldwin provides priority registration for Library programs to residents of Birmingham, Beverly Hills, and Bingham Farms.

**Log on to the  
Village website  
[www.binghamfarms.org](http://www.binghamfarms.org)  
for the latest information**

## **HOME SECURITY TIPS**

If there is any place most people want to be able to feel safe it's in their own home. Unfortunately there are those who do not share these same feelings and are willing to break into someone's house not only stealing their valuables but also their sense of security. There are certain things a home owner can do to lessen the chances of being the victim of a residential break in.

- Install an alarm system and make sure that you use it whenever you leave your house.
  - Use visible signage advertising that your house is alarmed.
  - Use quality dead bolt locks on your doors and have metal or reinforced door frames.
  - Use quality locks on your windows and sliding glass doors. Also consider using a secondary blocking device such as a wooden dowel or anti-lift device.
  - Install a safe that can be secured to the floor and use it to lock up your jewelry, important documents, and other valuables.
  - Have good exterior lighting, motion sensors and lighting on the walkways to your doors.
  - Use timers on interior lights and have a radio tuned to a talk radio station when you're away from home.
  - Get to know your neighbors and agree to watch each other's house.
  - Keep your garage door closed. Thieves look for open garages. It allows for easy access to a house or in stealing yard tools that are kept in the garage. Keep your car locked even when it's parked in the driveway. Thieves look for garage door openers and other valuables in parked cars.
- If you would like additional information on how you can make your house more secure please stop by the police station and pick up some of our handouts on home security. The Police Department also has a "House Check Form" that you can fill out when you are going to be away on vacation.

From Chief Pat Browne  
Franklin-Bingham Police Dept.

## ***COUNCIL ADOPTS A BALANCED FISCAL YEAR 2011-2012 BUDGET***

Things around Bingham Farms aren't getting any easier, but the Village Council recently passed a **balanced** budget for FY 2011-2012. The budget has been pared down to the minimum yet still maintains funding for critical services such as police and fire.

What makes this budget more challenging than last year are two factors: continued decline in revenue sharing (that portion of revenues the Village receives from the State in lieu of a Village sales tax) and continuing declines in taxable value of private homes and office buildings..

The majority of Village revenue comes from property taxes (personal &

real), fees from construction and fines from traffic violations.

To balance the budget, the Council voted to raise the millage rate to 7.4 mills, from the 6.8 mills that held for more than a decade. This increase however, did not cover the entire shortfall. The Village will dip into its Fund Balance for approximately \$150,000. This still leaves the Fund Balance well within acceptable accounting guidelines.

While revenues are decreasing, the Village has trimmed several expenditures.

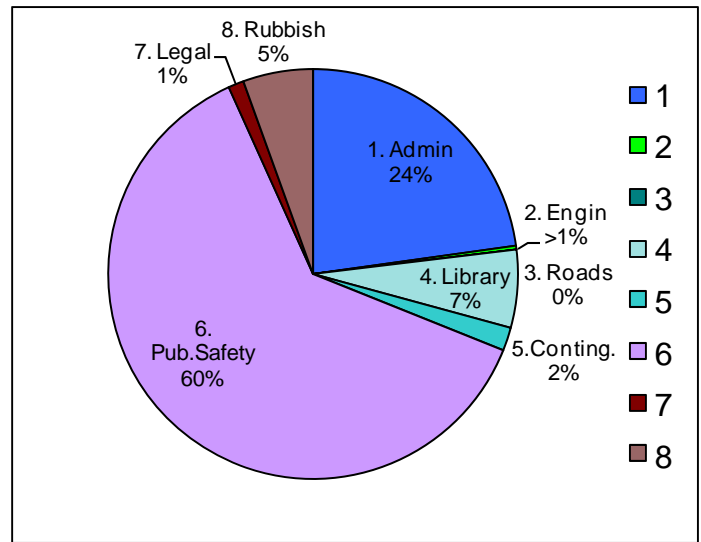
- The Fire Department submitted a budget the same as last year.

- The police department reflects a 2.9% increase in expenditures, primarily costs associated with the police contract.
- Cost of Baldwin Library contract is budgeted at the same level as last year.
- Village staff salaries are frozen for the third year at pre 2009-2010 levels.

Below is a snapshot of Village expenses for Fiscal Year 2011-2012. The major cost components of the budget include Public Safety (Fire & Police), Roads (maintenance & reconstruction) and Administration (includes major costs such as rent, audit, utilities, insurance and salaries).

Administrative	\$ 371,289
Engineering	5,000
Road Improvements*	0
Library	100,000
Contingency	30,000
Public Safety	1,012,996
Legal	20,000
Rubbish	<u>90,000</u>
 Total	 \$1,629,285

\*No new road reconstruction programs are planned for FY 2011-2012.



### **TAXES ARE DUE**

**BINGHAM FARMS  
VILLAGE TAX  
Due without penalty by  
August 31, 2011**

**SOUTHFIELD TWP.  
SUMMER TAX  
Due without penalty by  
September 14, 2011**

### **Bits n Pieces Cont. from Pg. 6**

**800.477.4747.** Call, even if your neighbor has already called it in. It helps DTE estimate how many customers are out of power.

- When a tree falls into the road, the Village will cut the tree so vehicles can get through.
- If the tree is in the right of way, the Village will remove the tree.
- If the tree trunk is on private property, the property owner is responsible for removing the tree.

### **Invasive Species Cont. from Pg. 5**

wrap itself around a tree and choke the life out of it. It's easily visible.

Getting rid of these vines is difficult, but not impossible.

Take a look around your property to see whether these invasive vines are attacking your trees. Pay special attention to heavily wooded areas.



## ***OFFICERS RECEIVE AWARDS***

Congratulations to our police officers and fire fighters who were recognized for exemplary service at an Awards Presentation in May. A few residents were also acknowledged for their service to the community.

### **Certificate of Commendation** (Exceptional Performance)

- Det. Lt. William Castro
- Sgt. James Hirschfeld
- Officer Michael Bastianelli
- Lt. Timothy Adams (Fire Dept.)
- Firefighter Andrew Boring
- EMS Lt. Thomas Begres
- Firefighter Marcus Butler

### **Citations** (Initiative in the performance of difficult or trying assignments)

- Chief Pat Browne
- Det. Lt. William Castro
- Sgt. James Hirschfeld
- Sgt. Brian Crane
- Officer mark Dyjewski
- Officer David Dwyer
- Officer Steven Goulet
- Officer Georg Krajewski
- Reserve Officer Joseph Kovacs

### **Lifesaving** (Directly responsible for the saving of a human life)

- Fire Chief Tony Averbuch
- Det. Lt. William Castro
- Lt. Jerry Johnson (Fire Dept.)
- Officer Steven Goulet
- Firefighter Richard Fern

### **Chief's Citation** (outstanding service to the Police Dept. by sworn, auxiliaries and civilians)

- Thomas Herpel
- William Lamott
- Richard Holloway
- Reserve Officer Capt. Michael Melekian
- Reserve Officer Lt. William Ewald
- Reserve Officer Joseph Kovacs
- Reserve Officer Ronald Berris
- Reserve Officer Kevin Crane
- Reserve Officer Thomas Kwietniewsky

### **Letter of Appreciation**

- Officer Mark Dyjewski
- Officer Michael Daisley

### **Civilian Citation** (non-sworn individuals who assist the department)

- Police Clerk Susan Schultz
- Thomas Couvreur

## ***UPCOMING EVENTS***

### **Birmingham**

**In The Park Concerts** - 7 p.m. Shain Park Every Wednesday thru August 10

**Farmer's Market** - Municipal Parking Lot #6 Old Woodward, (south of Maple) every Sunday 9 a.m. - 2:00 p.m. thru October

**Family Movie Night** - Booth Park 7:30 p.m. July 29 & August 12

**Day on the Town** - downtown July 23 9:00 a.m.- 9:00 p.m.

### **Franklin**

**Music on the Green** - downtown Franklin- evenings July 13, 20 & 27 at 7:00 p.m. weather permitting

**Movies on the Green** - downtown Franklin - 8:30 p.m. July 27, August 3 & 10

**Labor Day Parade** - downtown Franklin - Sept. 5

**Cider Mill** - Open from Sept. 4 - Nov. 21

### **General**

**Woodward Dream Cruise** - August 20

## ***CABLE TV PROBLEMS?***

Having problems with your Comcast or AT&T TV service or have a question about your bill?

COMCAST      1-800-266-2278  
 Local Office      248-549-2100

Local office located at 4500 Delemere Blvd, Royal Oak (south off 14 Mile Rd., east of Coolidge)

AT&T      1-800-288-2020

Birmingham Area Cable Board Complaint Line:  
**248.336.9445**

***VILLAGE OFFICES***

*will be closed on*

***July 4th and***

***September 6 - Labor Day***