



THE BINGHAM FARMS POST

Spring, 2014

Lt. William Castro Retires

It's rare these days for anyone to work for 25 years with the same employer, But that's just what Lt. Castro has done. He retired last month from the Franklin Bingham Police Dept.

He started on August 20, 1988, hired in by former Franklin Bingham Police Chief Ed Glomb. He was subsequently promoted to Detective Sergeant wherein he garnered an incredible closing rate on crimes.

While crime has always been low in Bingham Farms, there was one murder of a Brinks security guard years ago.

Detective Castro kept on that case for almost 10 years, keeping in touch with the victim's family and finally securing an arrest. The reason for the extended period of time was the shooter had been incarcerated on a prior felony before becoming



the main suspect in the Bingham Farms shooting.

Sgt. Castro kept solving B&Es over the years, adding on conviction after conviction. He could take the scarcest of clues and follow them to a successful conviction. No case was too small.

He was promoted to Lieutenant in 2008. Over the years, Lt. Castro attended many programs to enhance his skills, most recently attending the Northwestern University School of Police Staff and Command.

Although he's gone from Bingham Farms, he will not be forgotten.

And you just might run into him at events in Detroit, as he has taken the position of Security Director for the Port Authority in Detroit.

The Village wishes him well in this next phase of his sterling police career.

Large Item Pick Up Scheduled

Get ready. The Village's semi-annual, free, large item pick up is set for **Thursday, June 5th**. All items should be at the street by 7:00 a.m. Large bulky items may be placed at the street the weekend before the pick up.

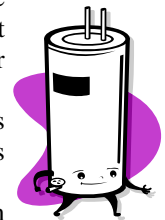
For new residents, the Village contracts with its rubbish contractor twice a year to haul away large items that normally are not included in the regular Thursday pick up.

This includes sofas, washing machines and hot water heaters.

It does not mean that it's time to clean out all the rubbish stored in your home. In the past, residents who were moving out of their home figured they could put everything out at the street. One resident had boxes and rubbish lined all along the street and half way down the driveway.

Car Trucking has the authority to

Cont. on Pg. 4



Residents Will Vote on a Packed Ballot in November

The ballot for the November elections will be extensive as various terms for local, state and federal seats will be expiring.

First, on the local side, just about every position on the Village Council will be on the ballot. This is a result of the State mandating Village elections be held in November of even years. As the Council has rotating terms of office, here are the seats up for election and the length of terms.

- President - 4 yr. term
- 3 Trustees - 4 yr. term
- 2 Trustees - 2 yr. term

Any interested homeowner is eligible to run for office. If you are interested, please contact the Village office.

Also, as a mandate from the State, Southfield Twp. will administer this election for the Village. All forms and petitions must be submitted to the Township. All Nominating Petitions must be submitted no later than 4:00 p.m. on July 22, 2014.

State elections will be for:



- Governor/Lt. Governor
- Secretary of State
- Attorney General
- State Senator
- State Representative
- University Boards
- State/County and District Court
- Judges

In addition, U.S. Senator & U.S. Representatives.

So get ready for the political advertisements leading up to primaries and the Bi-Annual November elections.

All Bingham Farms residents vote at Bingham Farms Elementary School.

Check Contractors Working in your Home

The Franklin - Bingham Farms Police Department has noted an increase in reported thefts allegedly conducted by workers who are completing jobs inside homes.

Recently there were investigated incidents where construction workers, maintenance personnel and domestic helpers have allegedly stolen property from inside the homes of Franklin residents.

The Department would like to remind everyone that, before hiring a contractor, please check with your neighbors and the Better Business Bureau (<http://detroit.bbb.org>) for references. Also call the Southfield Building Dept. (248.796.4100) to make sure that the contractor is licensed, that he has pulled the proper permits and that the work is set up for the required inspections.



Note that in Bingham Farms, construction cannot begin before 7:00 AM and must stop at dusk.

Finally, take some simple actions to secure your valuables when workers are in your home; such as locking up jewelry, currency and other valuable items so that they are not visible and not easily stolen.

**LARGE ITEM PICK UP
JUNE 5, 2014**

**ALL ITEMS TO THE
STREET BY
7:00 A.M.**

See Pg. 9 for details

SPRING INTO ACTION AT BASCC

BASCC invites seniors 50+ to get their bodies moving and keep their minds active this spring.

Swing those golf clubs either at lessons or on the golf course with one of the two BASCC golf leagues. Visit www.bascc.org for a full listing of offerings or stop by BASCC, 2121 Midvale Street, Birmingham.



HISTORY OF THE MOTOWN SOUND

Thursday, April 10 - 10:30 am
The Detroit Historical Society's Senior Curator, Joel Stone, delves into the city's history of music making, together with the elements that contributed to the unique style of Motown and Tamla records.

D-DAY NORMANDY INVASION - Untold story of "Deception, Spies and Bravery"

Wednesday, May 14 - 1:00 pm
As the 70th Anniversary of D-Day (June 6, 2014) approaches, **Oakland University Professor Frank Cardimen** focuses on the success at Normandy, which spelled the beginning of the end for Germany in WWII.

ALZHEIMER'S DISEASE: Know the Ten Signs- Early Detection Matters
Thursday, May 22 - 1:00-2:00 pm
This educational program, **presented by the Alzheimer's Association,** will give you an opportunity to learn about the ten warning signs of Alzheimer's disease, as well as what to do if you or your loved one is showing signs.

BEADING CLASS
Friday, June 6 - 12:30 pm- 3 pm
Design instructor Wendy Ross teaches the elements of bead layout and design. You'll be stringing and crimping like a professional before you know it!

HOW TO "DECLUTTER" YOUR LIFE
Thursday, June 12 - 10:30 am

Local Road Work Set for the Summer

Now that the bridge reconstruction is just about finished, it's time to look at what other road work is scheduled in the Village.

Thirteen Mile Rd. Bridge Reconstruction

As soon as conditions warrant, the bridge contractors will return to finish restoration. This work should not cause Thirteen Mile Road to be closed. There could be a few delays depending upon the work being done.



Local Roads

A tour of Village roads will be made in the spring to determine the extent of crack sealing on local roads.

Repairs are also scheduled for Britner Ct. and Timber Trail.

Linda Novak and Carolyn Stieger, will present organization techniques to maximize your living space and still enjoy your special "treasures".

RETIREMENT REIMAGINED Thursdays, May 15 and June 26 at 1 pm

Have you retired in the past few years? Come together to meet fellow recent retirees and explore opportunities to develop and pursue skills and interests. We will have speakers and activities to consciously plan our retirement to create happy, healthy lifestyles for many years to come. Join this fun and interesting group.

Visit www.bascc.org for a full listing of offerings or stop by BASCC, 2121 Midvale Street, Birmingham.

*Some classes may charge a minimal fee based on whether you are a BASCC Member or a non-member. Pre-register for classes in the BASCC office.

President's Letter

This year's tax revenue equals the amount of taxes collected in 1999 due to the economic downturn, reduced property values and the State's restrictions on municipal taxing authorities. During the past recession your Village Council and staff have maintained high quality fire, police and library services, replaced a dying bridge, and minimized additional property tax hardships.

We run a tight ship but the Village is going to need to raise its millage rate from 7.7 mills to 7.9 mills. The State Legislature's phase out of some business personal property taxes will probably reduce revenue by \$40,000 this year. The slight millage increase should raise about \$30,000, the minimum we can get by with.

The next Village election will be in November 2014. It is not unusual to have some attrition at the Council and appointed committee levels as residents move on or feel it's time to give someone else the chance to serve. Due to some resignations and appointments almost all

Council positions will be on the ballot, some for 2-year terms, others for 4-year terms. If you are considering running for Council, or would like to be put on the "bench" list we keep of residents willing to serve in appointed positions, contact our Village Clerk, Kathy Hagaman. Applications are available on the Village website at

www.binghamfarms.org.

Council has already taken a proactive look at the road damage this Winter (e.g., Olympic caliber potholes, sunken manhole covers, self-generated speed bumps). We have been advised that repairs should wait until the weather changes. Every member of Council understands road quality is a high priority.

Sincerely,

Jeffrey D. Modell, Esq.
Village President

ROAD COMMISSION IMPLEMENTS PLAN TO FIX THE POTHoles

The winter sure did a number on the roads. So welcome to Pothole County where some of those potholes are like craters.

The Road Commission for Oakland County has devised a 6 point plan to tackle the immense job of filling potholes.



1. Retain part-time, temporary workers to patch potholes and grade gravel roads.

2. Hired a private company specializing in pothole patching.

3. RCOC crews have been authorized to work extended shifts on many weekdays and weekends to patch potholes.

4. Four additional road graders are being rented to augment the existing fleet.

5. Private trucking companies are being hired to haul recycled asphalt product to get product to areas of the County in desperate need.

6. Three additional full-time mechanics and two full-time laborers have been hired to augment existing RCOC staff.

And the Road Commission has established a POTHOLE HOTLINE for residents to call and report a pothole.

**1-844-OAK-ROAD OR
(844-625-7623)**

Two additional temporary workers have been brought in to help handle the phone lines.

Mobile Watch Has ANOTHER Record Year

"Please say it's over". I am paraphrasing the title of a lead story in the fall edition of the Post. That of course was referring to the bridge construction. I am referring to winter. How grateful I'm sure we all are to welcome warmer temperatures.

Allow me to report though that the bitter cold has not discouraged our dedicated Mobile watch patrollers. We have once again surpassed last years patrol numbers. In 2013 Mobil watchers completed 359 patrols, all in an effort to keep our Village safe. Congratulations are in order for all our dedicated participants.



We always have a special educational meeting in May. This year a representative from BASCC (Birmingham Area Senior Coordinating Council) will discuss what the Center does to identify and meet the needs of older adults. Some of the activities include educational, recreational and social programs. Please join us on the first Wednesday in May (7) at 7:30 p.m. to learn more.



We do meet the first Wednesday of each month at 7:30PM in the Bingham Woods Clubhouse. We have a "fish bowl" drawing quarterly. When you do a patrol your name goes into the fish bowl. If your name is drawn you could win up to three free car washes from JAX.

Kathy Strettar
President
BF Mobile Watch

Next Fiscal Year Budget in the Works

The chart below shows the negative impact of falling property values. While some economists believe the worst is over, it's going to take a long time for the Village's finances to reflect that.

For the past two years, the Village had a millage rate of 7.7 mills. This year it will be necessary to raise the millage rate to 7.9 to yield the same tax revenue as last year.

The taxable value of real property has fallen considerably from 2008 when it reached its high of \$199,584,000. The chart below reflects the precipitous drop. The most recent estimates from Oakland County of

this year's total taxable value is \$154,618,000, which is less than taxable values in 1999.

The Village Council and staff are working diligently to keep costs under control. The Village has been a leader in using shared services to control costs while maintaining quality level services, especially police and fire services, DPW services and library privileges.

Police and Fire services are shared with Franklin, and Beverly Hills provides much of the everyday maintenance requirements of Bingham Farms.

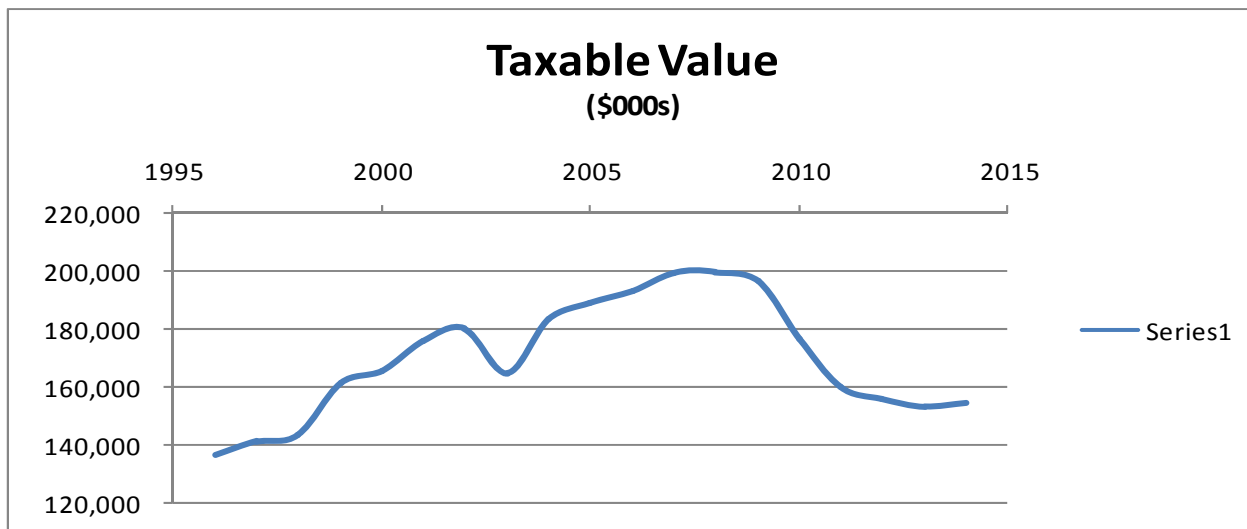
The Village contracts with Baldwin Library. Outside contractors

are used for rubbish collection, roadside maintenance and engineering.

The Village has again postponed reconstruction of Timber Trail. Maintenance on it will continue.

The Village's fund balance remains well within the state guidelines for a healthy municipality.

Once approved, the 2014-2015 Fiscal Year Budget will be available online.



Large Item Pick Up Cont. from Pg. 1

bypass homes that have an excessive amount of rubbish. If you are in need of a roll-off, call Car Trucking.

Should you have any questions, please feel free to contact the Village office or Car Trucking at 586.791.8480 to avoid any problems on the big day.

SEVERE WEATHER AWARENESS WEEK

APRIL 6—April 12, 2014

SPECIAL SIREN TEST OF OUTDOOR WARNING SYSTEM

WEDNESDAY, APRIL 9, 2014

AT 1:00 P.M.



COUNCIL Amends Its Snow Ordinance

Council often reviews ordinances and makes amendment when there is a need.

One ordinance that has been amended is the snow ordinance. The amendment prohibits snow to be plowed onto another's property. This means snow cannot be plowed across the road and dumped on neighboring private property or in the right of way.



Many times this past winter, snow plow contractors did exactly that and this procedure could potentially cause damage to a neighbor's lawn.

The Village will be again reminding property owners of this amendment in the fall. However, failure to control the actions of a snow plow contractor can result in a ticket that can be issued to the property owner.

VIALS OF LIFE FOR SENIORS

The Franklin Bingham Fire Department has put together a small plastic bottle, the contents of which will aid them to properly respond to a senior medical emergency.

The vial holds valuable medical information for a resident. It includes an information sheet and 2 personal profile sheets that hold critical information regarding medical history and current medications. Fill out the profile sheet, place the vial in the freezer and make sure it is easily visible when the freezer door is opened.



The vial also contains 2 display magnets that alert first responders that you have a Vial of Life completed. Place one magnet on your refrigerator door. Place the sticker adjacent to the a window by the front door.

The Vial of Life is available at the Village office. Stop by and pick one up.

These vials can shave off minutes for first responders trying to assess your medical situation in an emergency.

Having a Graduation Party - Play It Safe

Senior Prom and graduation are landmark events in most teenagers' lives. Though these two special moments symbolize both maturity and pending adulthood, parents must remember that when it comes to drinking, teens are still legally underage.

The Birmingham Bloomfield Community Coalition along with the other Oakland County coalitions is again launching the "Parents Who Host, Lose the Most: Don't be a party to underage drinking" public awareness campaign. It is designed to help parents consider the dangers of teenage drinking parties.




Simply stated: Parents who provide alcohol to their children's friends under any circumstances, even in their own homes, are breaking the law; parents who knowingly allow a person under 21 to remain in their home or on their property while consuming or possessing alcoholic beverages can be prosecuted; and parents can be sued if they give alcohol to anyone under 21 and they in turn hurt someone,

Keeping Seniors ON THE MOVE!




Birmingham Area Seniors Coordinating Council
 2121 Midvale Street,
 Birmingham, MI 48009
 (248) 203-5270
 www.bascc.org
 info@bascc.org

BASCC is a non-profit organization that provides programs and supportive services to adults 50+ in the community.



GOLF LEAGUES & LESSONS
 Seniors are invited to swing their golf clubs at lessons with a PGA professional or on the golf course with one of two BASCC golf leagues. Other fitness offerings include: Agebusters workout, stability ball, chair yoga, pickleball, tai chi & Zumba.



HEARING LOSS AND LOW VISION GROUPS
 These groups are designed to support people with vision or hearing challenges. Learn about products, services and hear speakers covering a wide range of topics. These groups meet the third Wednesday of the month.



INFORMATION AND REFERRAL SERVICES
 General geriatric counseling, housing and in-home health care options, Meals-on-Wheels and information on low-income programs and prescription coverage are just a few of the services available to seniors and their family members through the Outreach Department.

BASCC is now open until 8 p.m. on Tuesdays and Wednesdays.
 Call (248) 203-5270 to schedule a one-on-one computer class, play pickleball, bridge or attend one of several interesting lectures. Or visit www.bascc.org to view the latest newsletter and a listing of programs and services.

The Fight Continues Against The West Nile Virus

Just when we thought the battle with West Nile virus was winding down, out comes the data that last year cases of West Nile Virus increased significantly from the prior year.

2012 closed out with more than 200 cases; 23 of those in Oakland County.

The West Nile Virus is spread to humans when bitten by a mosquito that carries the virus.

With the number of cases rising, it's even more important to protect oneself. The best defense is a good offense.

So take the following steps to lower your chances.

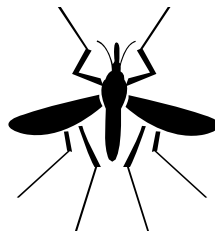
- ♦ Reduce areas where mosquitoes breed,
- ♦ Repel to protect against mosquitoes, and
- ♦ Report potential mosquito breeding areas.

Other measures that can reduce the risk of contracting the virus include:

- ♦ Repair all holes in windows and screens to keep mosquitoes out of your home.
- ♦ Empty water from mosquito breeding sites such as buckets, barrels, cans, old tires, or similar sites.
- ♦ Avoid being outdoors when mos-

quitoes are most active (dawn and dusk).

- ♦ Wear light colored, long-sleeved shirts and long pants when outdoors.
- ♦ Apply insect repellants that contain the active ingredient DEET to exposed skin or clothing.
- Always follow the manufacturer's directions for use. Avoid applying repellent containing DEET on children less than two years of age.



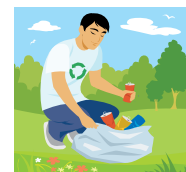
Dead birds can also be an indicator of West Nile Virus infected mosquitoes are in the area. To report dead birds, call the Oakland County Health Division Hotline at 1.877.377.3641. Wear gloves to protect yourself from direct contact with the bird and dispose of it properly.

For updates on West Nile Virus, log on to:
www.michigan.gov/westnilevirus
or
www.oakgov.com.

Village Needs Help From Residents

The question on the minds of a number of residents is, who is littering the Village roadways? Unless one sees someone do it, it's impossible to track down the culprits.

So, what to do? This is one area where residents can help. When you are out and about, if you would pick up a few pieces of litter, it would be a great help. If everyone did this, the problem would be taken care of and the Village would look great.



If you should see someone toss anything, get a description of the vehicle and a license plate. Call the police and relay the information.

The number for dispatch is 248.626.5444 and the police office is 248.626.9672.

Bits N Pieces

- Get email blasts from the Village office or the Police Department. Log on to the Village website, and click on the link "Stay Informed" at the bottom of the home page.
- Latex Paint is not a hazardous material. Use kitty litter to dry it up and dispose with regular trash.
- Tax Bills will be mailed out on June 30. They are due in the Village office by August 31st without penalty. **Postmarks are NOT accepted.**
- Have rubbish out at the street by 7:00 a.m. every Thursday morning.
- Fences are not allowed unless around a pool enclosure.
- Dog runs totaling no more than 250 sq. ft. and no more than 4-feet in height are allowed. Must get Council approval.

CELEBRATE
EARTH DAY
APRIL 22nd



**BINGHAM FARMS
RESIDENTS
FREE
HOUSEHOLD DOCUMENT
SHREDDING
AT
SOUTHFIELD TWP.
18550 W. 13 Mile Rd.
May 3, 2014
10:00 a.m. - 12:00 Noon**

Help Stop Illegal Dumping

Every year the Village picks up the tab to haul away debris dumped in the Village rights-of-way. It ranges from a truck full of old tires to wood chips to tree trunks.

If you see anything suspicious, such as a slow-moving, fully loaded truck, call police dispatch at **248.626.5444** immediately. Getting the license number or a description of the car or truck will help police track down the scofflaws.



If caught, the culprits face stiff fines, and must remove the debris or reimburse the Village for its costs to remove the materials.

HOW TO DISPOSE OF CFL & LED BULBS

Did you know that CFL & LED Light Bulbs contain hazardous materials? Did you know those burned out bulbs can be returned to mega stores such as Lowe's and Home Depot. And it's free disposal.

While the Village participates in a Household Hazardous Waste Program with SOCRRA (South Oakland Resource Recovery Authority) on Coolidge Highway, it costs the Village \$30 per car. Recently, a resident dropped off 3 of these bulbs. That's all. So the cost to the Village was \$30.



For economic reasons, please wait until you have a number of other products before dropping off light bulbs to SOCRRA.

Better yet, just bring them to a local Lowe's or Home Depot store and drop them in the recycling bin at any time and there is no charge.

Public Notice Noxious Weeds

It does not happen often, but there are times when property owners move away and the property is not maintained, especially mowing the grass. Grass that reaches a height of eight inches or more is considered a noxious weed.

Before the Village steps in to remove the violation, an annual notice is published in the Eccentric newspaper advising owners of the noxious weed ordinance. After the newspaper notice, the Village has the ability to act.

When an infraction occurs, a letter is sent to the property owner giving him ten days to rectify the situation. If not resolved within that time period, the Village will contract with a landscape company to cut the lawn as many times as needed during the course of the season.

The notice reads:

"Pursuant to Section 95.36(A), the Village hereby publishes notice to property owners that noxious weeds existing on a property as of May 1, 2014 may be cut, mowed or removed by the Village, with the property owner charged with the Village's actual and administrative costs and expenses in doing so, as many times that calendar year as neces-

sary to keep the property free from noxious weeds.

Specifically, the Village will provide written notice to owners of property upon which noxious weeds exist, and to occupants and agents of said owners known to the Village: (i) to cut, mow or remove the noxious weeds within 10 days of the date of the notice, (ii) to thereafter maintain the property free from noxious weeds, (iii) that upon a failure or refusal to do so, that the Commissioner, by Village employees or contractors, will enter upon the property and perform the required cutting, mowing or removal, (iv) that payment of the Village's actual and administrative expenses incurred in cutting, mowing or removal is the responsibility of the property owners and is secured by a lien on the property, (v) that the existence of noxious weeds is a public nuisance and (vi) notice of any public nuisance hearing that may be scheduled before the Village Council under Section 95.08."



WANT TO BE INFORMED AND RECEIVE SPECIAL ALERTS?

Register by way of the Village
website at

www.binghamfarms.org

Click on the "Stay Informed" link

Receive warnings, water alerts,
police notices and more via
email.

Sign up today.

STUDENTS, DO YOU NEED COMMUNITY SERVICE HOURS?

We need volunteers to help pick
up trash along Village roads.

Your hours, your schedule.

Call the Village office for more
info.

248.644.0044



Activities abound at The Baldwin Library

Get your calendars out. The Baldwin Library has released its schedule of special events.

This year Birmingham will host author **Chris Bohjalian**. The book selection is Before You Know Kindness. Bohjalian will be appearing on April 30 at the Community House (Birmingham) at 2 pm and at Shaarey Zedek Synagogue (Southfield) at 7 pm. Tickets are available free to Baldwin Library cardholders by calling 248-554-4650. This program is funded by the Jane Cameron Fund and the Friends of the Baldwin Public Library

The Friends of the Baldwin Public Library Spring Book Sale will happen May 2 through 5. Friday, May 2 is the Member Preview Night from 7 pm to 9 pm. Memberships will be available at the door. The sale will be open on Saturday, May 3 from 9:30 am to 4:30 pm. Sunday, May 4 is half-price day from 12 noon to 4 pm. Finally, Bag Day will happen on Monday, May 5 from 10 am to 2 pm.



The Summer Reading Open House will be held on Friday, June 13 from 1:00 to 5:00 pm. This popular event kicks-off the Library's popular Summer Reading program. Kids, teens, and adults are all welcome.

Baldwin provides priority registration for Library programs to residents of Birmingham, Beverly Hills, Bingham Farms, and Bloomfield Hills.

PLEASE WATCH OUT FOR FOLKS ON BICYCLES

They rarely abide by the Rules of the road and seem to come out of

NOWHERE



ROUGE RIVER ACTIVITIES

For decades now, municipalities have been trying to create programs that will clean up the Rouge River. The MDEQ has mandated that all municipalities receive a stormwater permit with designated objectives.

There is one volunteer group, Friends of the Rouge, that has made major inroads in this massive job. Since 1986 they have been promoting restoration and stewardship of the Rouge River.

Besides conducting special programs such as the Rouge Rescue, they sponsor special outings for people to explore the Rouge.

Two upcoming events are:
Friday, April 11 from 7:30-8:30 p.m.—Explore the amphibians in the West Bloomfield Woods Nature Preserve. It will take place at the West Bloomfield Woods Nature Preserve located at 4655 Arrowhead Rd.

Saturday, May 10 from 8:00 a.m.-10:00 a.m. Explore the birds of Eliza Howell Park, one of Detroit's regional parks that encompasses the confluence of the Main and Upper branches of the Rouge.

These activities are free to Friends of the Rouge and \$5 for non-members.

Saturday, May 17th Rouge Rescue '14 A day to help clean up the Rouge. Check their website for more information at www.therouge.org

Also Friends of the Rouge will be holding a fundraiser to support ongoing programs.

On Monday May 12th, their 6th Annual "ROUND FORE THE ROUGE" golf outing will be held at the Dearborn County Club. All proceeds will be used to promote restoration and stewardship of the Rouge

Fences Must be in Good Repair

It's been a rough winter and it looks like the temperatures are starting to creep upwards. With that, more folks will be out and about and winter clean up tops the list.

Some Village properties have fences either as decorative or enclosing a swimming pool or pond. It is imperative that all fences be maintained per Village ordinance.



Split rail fences are the most susceptible to damage whether from deer jumping over them or trees crashing into them. No matter the reason or the frequency, fences are to be kept in good condition.

Some fences have just fallen down over time. However, remnants remain. These should be taken down.

The Village is noted for its vast natural features, woodlands, rivers, flowers and fauna. As such the Village Councils have attempted to keep an open landscape and have limited fence approvals.

During the spring, Village staff will be on the lookout for fences in need of repair. Fix them first so the Village does

**REMEMBER:
PICK UP AFTER YOUR
DOG
IF HE LEAVES A
MEMENTO
ON SOMEONE'S
PROPERTY.**



SHREDDING OFFERED BY
SOUTHFIELD TOWNSHIP



CONFIDENTIAL
HOUSEHOLD DOCUMENTS

FOR FREE

SATURDAY, MAY 3, 2014

10 AM TO NOON

SOUTHFIELD TOWNSHIP PARKING LOT

18550 W. 13 MILE ROAD

WILL ACCEPT 5 OR 6 STORAGE SIZE BOXES

REMOVE DOCUMENTS FROM PLASTIC OR METAL FILE
FOLDERS OR BINDERS

GUIDELINES FOR DISPOSING OF LATEX PAINT

In response to questions regarding what to do with old latex paint, SOCRRA has developed a few simple guidelines. Latex paint is technically not a Household Hazardous Waste, but it is considered a liquid and therefore cannot be placed in with the trash. It must be turned into a solid. To do this, the paint must first be dried or hardened before it is disposed of in the trash, and the empty paint cans placed in the recycling bin. **Because oil-based paint contains dangerous solvents, it is important to remember that these procedures can only be used with latex paint.**

Natural Drying - With latex paint cans that are less than a quarter full, simply remove the lid and place the can in a well-ventilated area. The remaining paint should be dry within a few days. Once dry, the hardened paint can be chipped out and placed with the trash. The empty paint can, whether metal or plastic, should be placed in the recycling bin.



For paint cans that are more than a quarter full, you'll need:

Paint Hardener - You can pick up paint hardener at any local hardware or paint store. Once you have your paint hardener there are a few simple steps to follow:

1. Cover your work surface to protect it from paint splashes
2. Add a paint hardener to the can – read the directions on the packet to find out how much hardener you need to add. Typically one packet will harden up to 2/3rds of a gallon of paint.
3. Stir and mix thoroughly. After a few minutes, the paint will have a chunky, oatmeal-like texture.

You can now dispose of the dried paint in the trash. The empty paint can be placed in the recycling bin.

Kitty Litter - This common, household absorbent works well in removing the moisture from latex paint. How much kitty litter to add depends on the makeup and age of the latex paint. In most cases, start with a cup or two and add as needed. Stir thoroughly and after a short time, the paint will thicken. Dispose of the hardened material in the trash and recycle the empty paint cans.



Saw Dust, Mulch, Small Animal Bedding, & Sand – These are other common absorbents that can be used to thicken and solidify latex paint. Use them the same way you would use kitty litter. Remember to recycle empty paint cans **and lids** after disposing of the hardened paint.

Some general tips to consider before drying latex paint:

- To limit waste buy only what you need – ask at the paint stores, they are the experts!
- Store cans in a proper place, properly sealed, so the paint doesn't leak or dry out.
- Storing paint cans upside down can help keep paint fresh.
- Try to use all of the paint.
- Donate any leftover paint to local schools, churches or theatre groups.

LARGE ITEM PICK UP REGULATIONS

Date: Thursday June 5, 2014

Time: All large items at street by 7:00 a.m.

Please Note: For the large item pick up ONLY, items such as couches, washing machines etc. may be placed at the curb as early as June 1

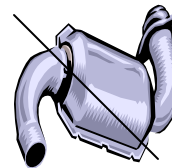
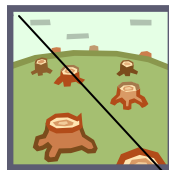
ACCEPTABLE ITEMS

- * Large appliances, furniture and hot water heaters
(Refrigerators & freezers must have Freon removed prior to pick up) (Doors must also be removed)
- * Only small tree stumps
- * Brush and tree branches must be bundled and the length may not exceed four feet
- * Rolls of carpet and linoleum must be tied together with the length not to exceed four feet
- * Disposal of construction materials is limited to one 32-gallon trash container



UNACCEPTABLE ITEMS

- * Large tree stumps
- * Hazardous waste
- * Automotive parts
- * Tires
- * Loose gravel
- * Large amounts of construction material & loose items



Car Trucking has the right to refuse to pick up excessive amounts of materials. If you have a large quantity of items, please call Car Trucking at **586.791.8480** and make special arrangements. Car Trucking does have dumpsters (roll-offs) available.

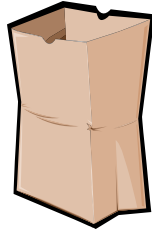
Compost season begins

Now that the snow has melted and spring is officially here, the weekly pick up of compost begins on April 10th and will run through the end of November.

Compost materials include leaves, grass, plants and small bushes.

All compost should be placed in **brown paper bags**. Compost placed in plastic bags will go in with the regular trash as the plastic does not disintegrate quickly.

Tree limbs and branches should be tied into bundles no more than 4' in length. Car Trucking will not pick up anything that is not tied.



Happenings Around Town

Birmingham

Farmer's Market - every Sunday May 4- October 19 9:00 am-3:00 pm. Municipal Lot 6 - North Old Woodward

Art Birmingham - May 10 & 11- Shain Park 10:00 a.m. - 5:00 p.m.

50th Birmingham Village Fair- May 29 - June 1 Shain Park

In the Park Summer Concerts - Wednesdays, June - August 7:00 p.m. Shain Park starting June 13th

Movie Nite in Booth Park - June 20 - 7:30 p.m. Movie begins at dusk

Fireworks - Lincoln Hills Golf Course - July 3 Gates open at 7:30 pm. Rain date July 5.

Beverly Hills

Park Clean Up - May 10 at 10:00 a.m. - Rain Date May 17 10:00 a.m.

Memorial Day Parade & Carnival - May 26 Beverly Park - starts at 11:00 am.

Rouge River Day - June 7

Southfield Twp.

Free Household Shredding - May 4 - 10 am - Noon Parking Lot 18550 W. Thirteen Mile Rd.

VILLAGE COUNCIL MEETING DATES

April 28

May 27 (Tuesday)

June 23

April 28th meeting begins at 8:00 p.m. All other meetings start at 7:30 p.m.

What kind of Spring will it be?

Goodbye wet winter, hello wet spring?

The Farmer's Almanac came out with its spring forecast and it's calling for a cold and wet weather right into June.

April

1st-3rd. Slow clearing.

4th-7th. Unseasonably cold.

8th-11th. Showers, thunderstorms.

12th-15th. Unseasonably warm temperatures; increasing rain, thunderstorm activity.

16th-19th. Big storm to the east could bring late-season heavy, wet snow eastern Michigan, northeast Ohio.



20th-23rd. Partly sunny. Turning milder.

24th-27th. A brief shower, then turning unseasonably cold, but dry.

28th-30th. Rain, flakes of wet snow.

May

1st-3rd. Stormy days/wet weather.

4th-7th. Ongoing risk of showers.

8th-11th. Cloudy, then stormy.

12th-15th. Clear, turning milder.

16th-19th. Widespread thunderstorm activity

20th-23rd. Turning progressively warmer.

24th-27th. Frequent rain showers, then much cooler.

28th-31st. Clear skies.

The Bingham Farms Post is published quarterly by the Village of Bingham Farms.

Editor: Kathryn Hagaman
clerk@binghamfarms.org

The next edition of the Post is scheduled for July, 2014. Deadline for submission of articles is June 14, 2014.

All articles must be submitted in writing to the Village office. The editing of articles is left to the sole discretion of the staff.

Website: www.binghamfarms.org